

HINGE COLLECTION



6501



6502



6503



6613



6614



6615



3501



3502



3503



3504



3505



3506



3507



3508



3509



3510



3511



3524



3512



3513



3514



3516



3525



3401



3402



3403



3404



3526

HINGE COLLECTION



3405



3406



3407



3408



3521



3522



3409



3410



3411



3412



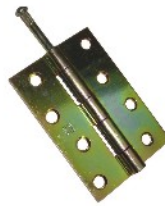
3523



3517



3518



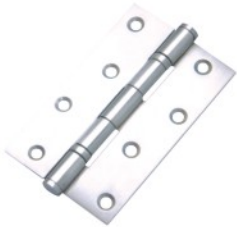
3519



3520



3527



8501



8502



8503



8504



8505



8506



8507



3528



3529



3530



3531

REF	ITEM	SIZE _(mm)	MATERIAL
6501	Parliament Hinge	75, 100	Brass
6502	Engraved Hinge	75, 100	Brass
6503	Butt Hinge	75	Brass
6613	Butt Hinge	62 x 37	Brass
6614	Butt Hinge	50 x 28	Brass
6615	"H" Hinge	65, 32	Brass
3501	Light Pattern Narrow Butt Hinges Loose Cup Head Pin	76, 89, 102	Iron
3502	Strong Butt Hinge	76, 102	Iron
3503	Light Pattern Narrow Butt Hinges	25, 38, 50, 63, 76, 89, 102, 152	Iron
3504	Narrow Butt Hinges Uncranked	76, 102, 127, 152	Iron
3505	Butt Hinges Round Corner	89	Iron
3506	Cast Iron Butt Hinges	63, 76, 100	Iron
3507	Lift Off Hinge - Left/Right	100	Iron
3508	Adjustable Lift off Hinge	100	Iron
3509	Back Flap Hinge Cranked/Uncranked	25, 32, 38, 50, 76	Iron
3510	Heavy Double Flap Welded Hinges	76, 100, 127, 152	Iron
3511	Extra Strong Butt Hinge	76, 102, 152	Iron
3512	Hinge	110 x 80	Iron
3513	Self Locating Butt Hinges	50, 63, 76, 102	Iron
3514	Flush Hinges	50, 63, 76, 102	Iron
3516	Continuous Piano Hinge	25, 32	Iron
3401	Hinge Front	405	Iron
3402	Hinge Front	405	Iron
3403	Light Strap Hinge	102, 152, 203, 254	Iron
3404	Hinge	275	Iron
3524	Butterfly Hinge	-	Iron
3525	H Hinge	7"	Iron
3526	Half Butterfly Hinge	-	Iron

8501	Bearing Hinge	75, 100, 125, 150	S.Steel
8502	Butt Hinge	75, 100, 125, 150	S.Steel
8503	Washer Hinge	75, 100, 125, 150	S.Steel
8504	Lift Off Hinge	75, 100, 125, 150	S.Steel
8505	Parliament Hinge	75, 100, 125, 150	S.Steel
8506	Back Flap Hinge - Round Corner	75	S.Steel
8507	Hinge	75	S.Steel
3521	Penny End T Hinge	12"	Iron
3522	Suffolk Latch	12"	Iron
3523	H Hinge Left Handle	9"	Iron
3527	Snake Hinge	100	Iron
3528	Hinge	89X93	Iron
3529	Hinge - Sheet	134x46	Iron
3530	Hinge	250	Iron
3531	Hinge	220 Open	Iron

REF	ITEM	SIZE _(mm)	MATERIAL
3405	Tee Hinge - Light	100, 150, 200, 254, 300	Iron
3406	Hinge	270	Iron
3407	Hinge Front	295	Iron
3408	'S' Hook with Bolt	180	Iron
3409	Hinge Front	165, 250	Iron
3410	Blind Hinge - Brick/Wood	165 x 125	Iron
3411	Hinge Front	165, 250	Iron
3412	Hinge Front	165, 250	Iron
3517	Storm Proof Hinge	89	Iron
3518	Light Pattern Narrow Butt Hinge	76, 89, 102	Iron
3519	Narrow Butt Hinge Loose Pin	76, 89, 102	Iron
3520	Hinge Double Security Bolts	102	Iron